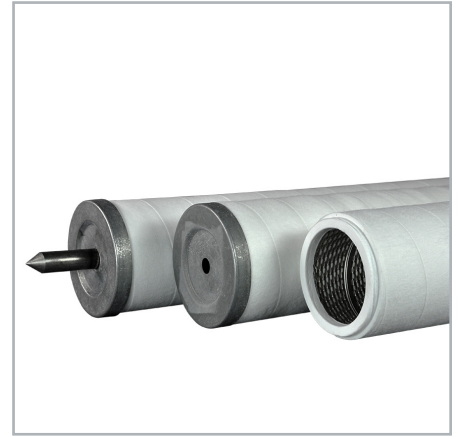


PEACH® DYNASEP™ PEACH DEPTH STYLE, GAS FILTER-SEPARATOR CARTRIDGES

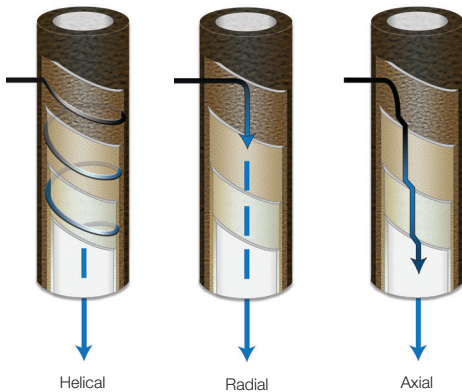
Series PPCHG

for use in Peerless filter-separator vessels or competitor vessels of similar design



The PEACH DynaSep, Series PPCHG, cartridge is a great choice for removing deformable and shear-sensitive contaminants found in natural gas streams. This cartridge can be used in Peerless filter-separator vessels, as well as competitor vessels of similar design. The synthetic construction allows for the use of improved media technologies and is an excellent

upgrade option to traditional fiberglass cartridges. The Series PPCHG is made using the patented PEACH process which provides increased flow, high efficiency and effective removal of contaminants. This equates to increased operational life, fewer change-outs, reduced maintenance and reduced costs.



THREE FLOW PATHS FOR UNPARALLELED FILTRATION

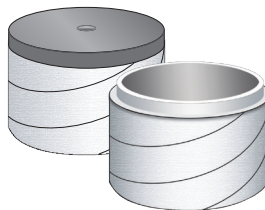
PEACH® is a patented manufacturing process for making a unique depth style filter cartridge. Through thermal bonding, spiral layers of engineered filtration media are applied to conform and overlap each previous layer forming a conical helix pattern. This filter structure results in a gradient density pattern that provides an extraordinary flow path in radial, axial and helical directions. This tortuous flow path yields high contaminant loading, structural strength, maximum efficiency, and an overall outstanding filtration performance.

Removes Contaminants such as:

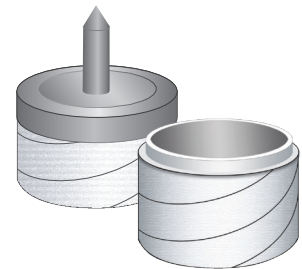
Asphaltenes, Coal Fines, Dirt, Iron Sulfides, Molecular Sieve Dust, Pipe Scale, Salts, Sand, Wear Metals



PPCHG
DOE Style with
Integral PEACH Caps



PPCHG-CE & PPCHG-EC
SOE End Style
Top Closed with Bolt Hole
Bottom Open w/Integral PEACH Cap



PPCHG-EXT
EXT End Style
Top Closed w/Extension
Bottom Open w/Integral PEACH Cap



ENGINEERING YOUR SUCCESS.

MATERIALS

MEDIA	PEACH Polyester
CORE	Tin Plated Steel
END CAPS	Integral End Caps (No Gasket Seal Required) Carbon Steel (Optional)
SEAL	None, Buna-N, Viton®

NOMINAL DIMENSIONS*

SIZE	O.D.	I.D.	LENGTH
336	4.53" / 115mm	3.16" / 80mm	36" / 914mm
524	5.73" / 146mm	4.25" / 108mm	24.5" / 622mm
536	5.73" / 146mm	4.25" / 108mm	36.5" / 927mm
572	5.73" / 146mm	4.25" / 108mm	72" / 1829mm
572-UFS**	6" / 152mm	4.9" / 124mm	72" / 1829mm

* Dimensions may vary depending on end cap style

** Fits Peerless ULTRA Filter-Separator

PERFORMANCE

MICRON RATING: 0.3, 0.5, 1, 5, 10

EFFICIENCY: 99.98%

0.3µm ratings are recommended when iron sulfide removal is required

OPERATING DATA

FLOW DIRECTION: Outside-to-Inside

MAX. TEMP: Polyester 240°F / 116°C

MAX. DIFFERENTIAL PRESSURE: 35 psid / 2.4 bar

RECOMMENDED CHANGE-OUT

DIFFERENTIAL PRESSURE: 12–15 psid / 0.8–1.0 bar

• Max. Pressure may be limited by vessel manufacturer's design



**SCAN QR CODE FOR ADDITIONAL
PRODUCT INFORMATION INCLUDING
AVAILABLE PART NUMBERS**

For technical questions contact ipf.technical@support.parker.com or call 940-325-2575

To order, contact a support representative at ipf.support@support.parker.com or call 940-325-2575

Purchasing details: Request a quote at ipf.quotes@support.parker.com

Parker IPF Standard Terms & Conditions apply www.parker.com/IPF-Aftermarket-TOS

- Consult factory for available options.
- Viton® is a registered trademarks of E. I. du Pont de Numours and Company.

© 2023 Parker Hannifin Corporation
DS-PEACHDYNASEP-PPCHG-231114



Parker Hannifin Corporation
Industrial Process Filtration Division
Phone 940-325-2575 | Toll Free 1-800-877-7326
www.parker.com/ipf